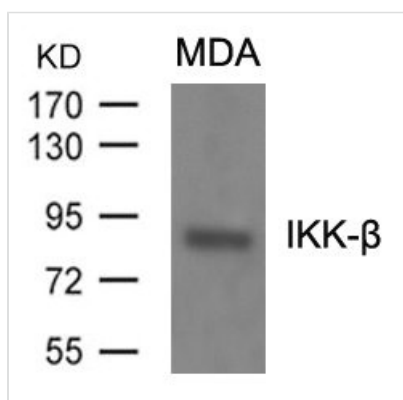




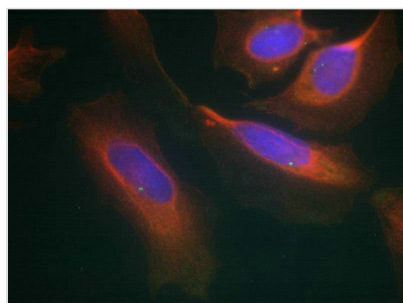
# IKBKB (Ab-199) Antibody

<b>Product Code</b>	CSB-PA598183
<b>Storage</b>	Upon receipt, store at -20°C or -80°C. Avoid repeated freeze.
<b>Uniprot No.</b>	O14920
<b>Immunogen</b>	Peptide sequence around aa.197~201 (Q-K-Y-T-V) derived from Human IKK-b.
<b>Raised In</b>	Rabbit
<b>Species Reactivity</b>	Human,Mouse,Rat
<b>Specificity</b>	The antibody detects endogenous level of total IKK-bprotein.
<b>Tested Applications</b>	ELISA,WB,IF;WB:1:500-1:1000,IF:1:100-1:200
<b>Form</b>	Supplied at 1.0mg/mL in phosphate buffered saline (without Mg <sup>2+</sup> and Ca <sup>2+</sup> ), pH 7.4, 150mM NaCl, 0.02% sodium azide and 50% glycerol.
<b>Purification Method</b>	Antibodies were produced by immunizing rabbits with synthetic peptide and KLH conjugates. Antibodies were purified by affinity-chromatography using epitope-specific peptide.
<b>Clonality</b>	Polyclonal
<b>Alias</b>	I-kappa-B kinase 2; I-kappa-B-kinase beta; IKK2; IkbKB; NFKB1KB
<b>Product Type</b>	Polyclonal Antibody
<b>Immunogen Species</b>	Homo sapiens (Human)
<b>Target Names</b>	IKBKB

## Image



Western blot analysis of extracts from MDA cells using IKK-b(Ab-199) Antibody.



Immunofluorescence staining of methanol-fixed HeLa cells using IKK-b(Ab-199) Antibody.



**Usage**

For Research Use Only. Not for use in diagnostic or therapeutic procedures.