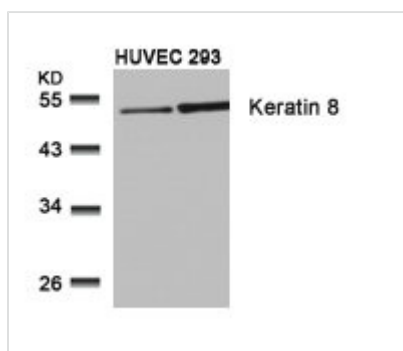




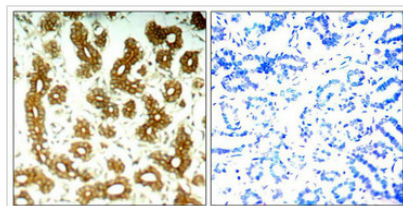
KRT8 (Ab-74) Antibody

| | |
|----------------------------|---|
| Product Code | CSB-PA982739 |
| Storage | Upon receipt, store at -20°C or -80°C. Avoid repeated freeze. |
| Uniprot No. | P05787 |
| Immunogen | Peptide sequence around aa.72~76 (L-L-S-P-L) derived from Human Keratin 8 (CK8). |
| Raised In | Rabbit |
| Species Reactivity | Human |
| Specificity | The antibody detects endogenous level of total Keratin 8 protein. |
| Tested Applications | ELISA, WB, IHC, IF; WB: 1:500-1:1000, IHC: 1:50-1:200, IF: 1:100-1:200 |
| Form | Supplied at 1.0mg/mL in phosphate buffered saline (without Mg ²⁺ and Ca ²⁺), pH 7.4, 150mM NaCl, 0.02% sodium azide and 50% glycerol. |
| Purification Method | Antibodies were produced by immunizing rabbits with synthetic peptide and KLH conjugates. Antibodies were purified by affinity-chromatography using epitope-specific peptide. |
| Clonality | Polyclonal |
| Alias | CK 8; CK8; CYK8; Cytokeratin endo A; K8 |
| Product Type | Polyclonal Antibody |
| Immunogen Species | Homo sapiens (Human) |
| Target Names | KRT8 |

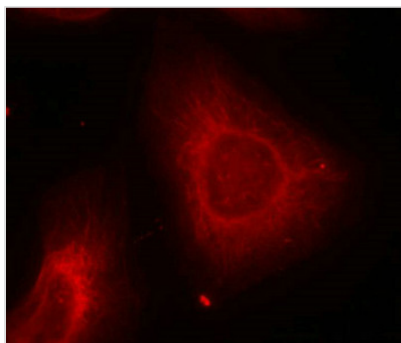
Image



Western blot analysis of extracts from HUVEC and 293 cells using Keratin 8(Ab-74) Antibody.



Immunohistochemical analysis of paraffin-embedded human breast carcinoma tissue using Keratin 8(Ab-74) Antibody (left) or the same antibody preincubated with blocking peptide (right).



Immunofluorescence staining of methanol-fixed Hela cells using Keratin 8(Ab-74) Antibody.