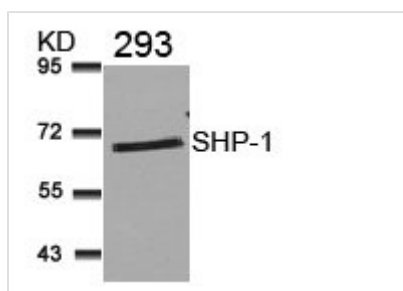




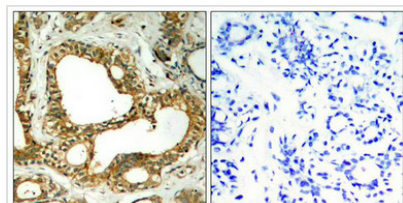
PTPN6 (Ab-536) Antibody

| | |
|----------------------------|---|
| Product Code | CSB-PA561602 |
| Storage | Upon receipt, store at -20°C or -80°C. Avoid repeated freeze. |
| Uniprot No. | P29350 |
| Immunogen | Peptide sequence around aa.534~538 (S-E-Y-G-N) derived from Human SHP-1. |
| Raised In | Rabbit |
| Species Reactivity | Human,Mouse,Rat |
| Specificity | The antibody detects endogenous level of total SHP-1 protein. |
| Tested Applications | ELISA,WB,IHC,IF;WB:1:500-1:1000,IHC:1:50-1:200,IF:1:100-1:200 |
| Form | Supplied at 1.0mg/mL in phosphate buffered saline (without Mg ²⁺ and Ca ²⁺), pH 7.4, 150mM NaCl, 0.02% sodium azide and 50% glycerol. |
| Purification Method | Antibodies were produced by immunizing rabbits with synthetic peptide and KLH conjugates. Antibodies were purified by affinity-chromatography using epitope-specific peptide. |
| Clonality | Polyclonal |
| Alias | 70Z-SHP; EC 3.1.3.48; HCP; HCPH; Hematopoietic cell protein-tyrosine phosphatase |
| Product Type | Polyclonal Antibody |
| Immunogen Species | Homo sapiens (Human) |
| Target Names | PTPN6 |

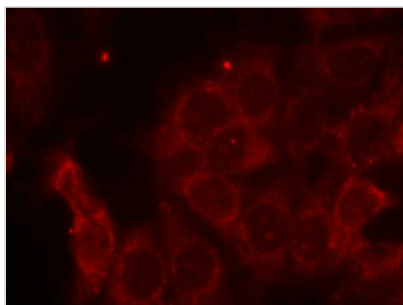
Image



Western blot analysis of extracts from 293 cells using SHP-1(Ab-536) Antibody.



Immunohistochemical analysis of paraffin-embedded human breast carcinoma tissue using SHP-1(Ab-536) Antibody(left) or the same antibody preincubated with blocking peptide(right).



Immunofluorescence staining of methanol-fixed MCF cells using SHP-1(Ab-536) Antibody.

Usage

For Research Use Only. Not for use in diagnostic or therapeutic procedures.