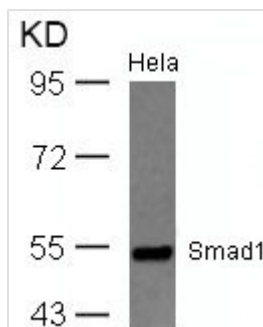




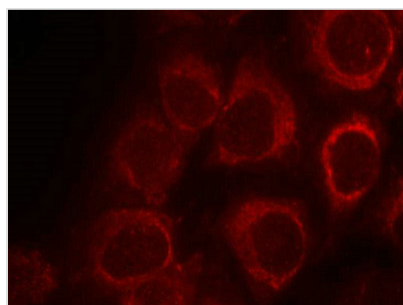
SMAD1 (Ab-465) Antibody

Product Code	CSB-PA135678
Storage	Upon receipt, store at -20°C or -80°C. Avoid repeated freeze.
Uniprot No.	Q15797
Immunogen	Peptide sequence around aa. 461~465 (I-S-S-V-S) derived from Human Smad1.
Raised In	Rabbit
Species Reactivity	Human,Mouse,Rat
Specificity	The antibody detects endogenous level of total Smad1 protein.
Tested Applications	ELISA,WB,IF;WB:1:500-1:1000,IF:1:100-1:200
Form	Supplied at 1.0mg/mL in phosphate buffered saline (without Mg ²⁺ and Ca ²⁺), pH 7.4, 150mM NaCl, 0.02% sodium azide and 50% glycerol.
Purification Method	Antibodies were produced by immunizing rabbits with synthetic peptide and KLH conjugates. Antibodies were purified by affinity-chromatography using epitope-specific peptide.
Clonality	Polyclonal
Alias	Mad-related protein 1; SMAD 1; hSMAD1; Transforming growth factor-beta-signaling protein 1;
Product Type	Polyclonal Antibody
Immunogen Species	Homo sapiens (Human)
Target Names	SMAD1

Image



Western blot analysis of extracts from HeLa cells using Smad1 (Ab-465) Antibody.



Immunofluorescence staining of methanol-fixed HeLa cells using Smad1 (Ab-465) Antibody.