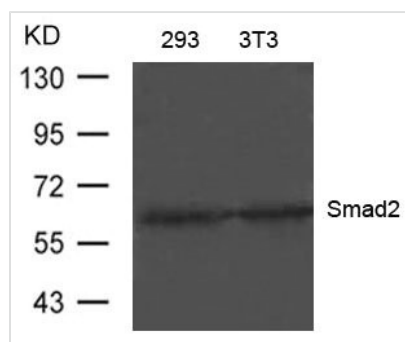




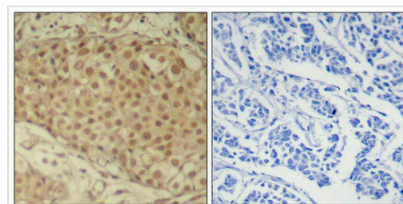
SMAD2 (Ab-220) Antibody

Product Code	CSB-PA093530
Storage	Upon receipt, store at -20°C or -80°C. Avoid repeated freeze.
Uniprot No.	Q15796
Immunogen	Peptide sequence around aa.218~222 (P-E-T-P-P) derived from Human Smad2.
Raised In	Rabbit
Species Reactivity	Human,Mouse,Rat
Specificity	The antibody detects endogenous level of total Smad2 protein.
Tested Applications	ELISA,WB,IHC;WB:1:500-1:1000,IHC:1:50-1:200
Form	Supplied at 1.0mg/mL in phosphate buffered saline (without Mg ²⁺ and Ca ²⁺), pH 7.4, 150mM NaCl, 0.02% sodium azide and 50% glycerol.
Purification Method	Antibodies were produced by immunizing rabbits with synthetic peptide and KLH conjugates. Antibodies were purified by affinity-chromatography using epitope-specific peptide.
Clonality	Polyclonal
Alias	JV18-1; MADH2; MADR2; Mad-related protein 2; Mothers against DPP homolog 2
Product Type	Polyclonal Antibody
Immunogen Species	Homo sapiens (Human)
Target Names	SMAD2

Image



Western blot analysis of extracts from 293 and 3T3 cells using Smad2(Ab-220) Antibody



Immunohistochemical analysis of paraffin-embedded human breast carcinoma tissue using Smad2(Ab-220) Antibody (left) or the same antibody preincubated with blocking peptide (right).

Usage

For Research Use Only. Not for use in diagnostic or therapeutic procedures.