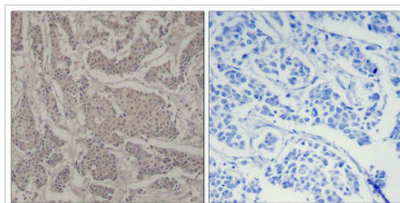




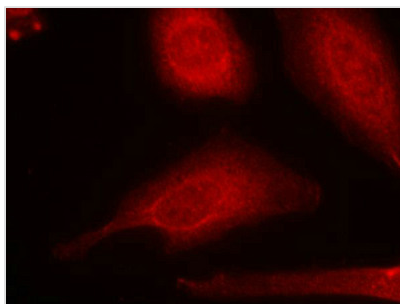
SMAD3 (Ab-425) Antibody

Product Code	CSB-PA794085
Storage	Upon receipt, store at -20°C or -80°C. Avoid repeated freeze.
Uniprot No.	P84022
Immunogen	Peptide sequence around aa.423~427 (C-S-S-V-S) derived from Human Smad3.
Raised In	Rabbit
Species Reactivity	Human,Mouse,Rat
Specificity	The antibody detects endogenous level of total Smad3 protein.
Tested Applications	ELISA,IHC,IF;IHC:1:50-1:100,IF:1:100-1:200
Form	Supplied at 1.0mg/mL in phosphate buffered saline (without Mg ²⁺ and Ca ²⁺), pH 7.4, 150mM NaCl, 0.02% sodium azide and 50% glycerol.
Purification Method	Antibodies were produced by immunizing rabbits with synthetic peptide and KLH conjugates. Antibodies were purified by affinity-chromatography using epitope-specific peptide.
Clonality	Polyclonal
Alias	JV15-2; MAD-3; MADH3; Mad3; Mothers against DPP homolog 3
Product Type	Polyclonal Antibody
Immunogen Species	Homo sapiens (Human)
Target Names	SMAD3

Image



Immunohistochemical analysis of paraffin-embedded human breast carcinoma tissue using Smad3(Ab-425) Antibody(left) or the same antibody preincubated with blocking peptide(right).



Immunofluorescence staining of methanol-fixed HeLa cells using Smad3(Ab-425) Antibody.

Usage

For Research Use Only. Not for use in diagnostic or therapeutic procedures.