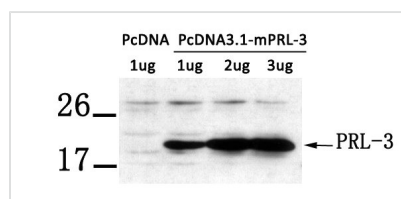




PTP4A3 Antibody

Product Code	CSB-PA132624
Storage	Upon receipt, store at -20°C or -80°C. Avoid repeated freeze.
Uniprot No.	O75365
Immunogen	Peptide sequence around aa. 161-166 (K-D-P-H-T) derived from Human PTP4A3.
Raised In	Rabbit
Species Reactivity	Human, Mouse
Specificity	The antibody detects transfected PRL-3 protein.
Tested Applications	ELISA, WB; WB: 1:500-1:1000
Form	Supplied at 1.0mg/mL in phosphate buffered saline (without Mg ²⁺ and Ca ²⁺), pH 7.4, 150mM NaCl, 0.02% sodium azide and 50% glycerol.
Purification Method	Antibodies were produced by immunizing rabbits with synthetic peptide and KLH conjugates. Antibodies were purified by affinity-chromatography using epitope-specific peptide.
Clonality	Polyclonal
Alias	protein tyrosine phosphatase type IVA; PRL3; PRL-R; PTP4A3;
Product Type	Polyclonal Antibody
Immunogen Species	Homo sapiens (Human)
Target Names	PTP4A3

Image



Western blot analysis of extract from LX-2 cells transfected with PRL-3 using PRL-3 antibody.

Usage

For Research Use Only. Not for use in diagnostic or therapeutic procedures.