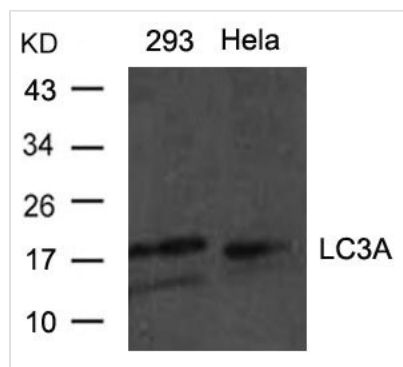




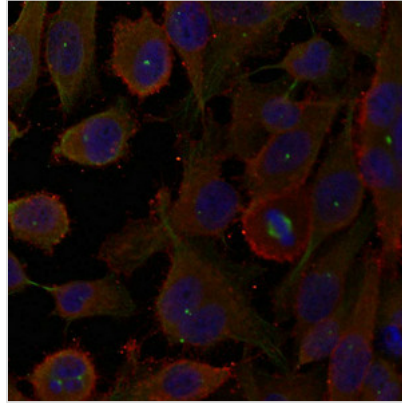
MAP1LC3A Antibody

Product Code	CSB-PA177902
Storage	Upon receipt, store at -20°C or -80°C. Avoid repeated freeze.
Uniprot No.	Q9H492
Immunogen	Peptide sequence around aa.5~10 (R-P-F-K-Q) derived from Human LC3A.
Raised In	Rabbit
Species Reactivity	Human,Mouse,Rat
Specificity	The antibody detects endogenous level of total LC3A protein.
Tested Applications	ELISA,WB,IF;WB:1:500-1:1000,IF:1:100-1:200
Form	Supplied at 1.0mg/mL in phosphate buffered saline (without Mg ²⁺ and Ca ²⁺), pH 7.4, 150mM NaCl, 0.02% sodium azide and 50% glycerol.
Purification Method	Antibodies were produced by immunizing rabbits with synthetic peptide and KLH conjugates. Antibodies were purified by affinity-chromatography using epitope-specific peptide.
Clonality	Polyclonal
Alias	Microtubule-associated protein 1 light chain 3 alpha; MAP1A/1B light chain 3 A; MAP1A/MAP1B LC3 A; MAP1 light chain 3-like protein 1; Autophagy-related protein LC3 A
Product Type	Polyclonal Antibody
Immunogen Species	Homo sapiens (Human)
Target Names	MAP1LC3A

Image



Western blot analysis of extracts from HeLa and 293 cells using LC3A antibody.



Immunofluorescence staining of methanol-fixed HeLa cells using LC3A antibody.

Usage

For Research Use Only. Not for use in diagnostic or therapeutic procedures.