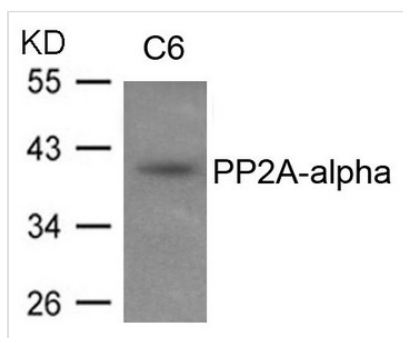




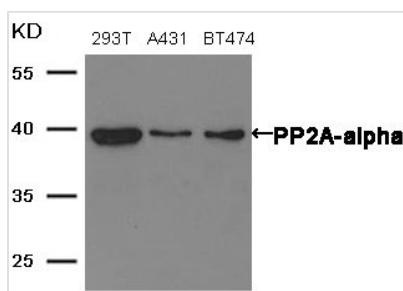
PPP2CA Antibody

Product Code	CSB-PA574686
Storage	Upon receipt, store at -20°C or -80°C. Avoid repeated freeze.
Uniprot No.	P67775
Immunogen	Peptide Corresponding to the amino terminal sequence derived from Human PP2A-alpha.
Raised In	Rabbit
Species Reactivity	Human,Mouse,Rat
Specificity	The antibody was affinity-purified from rabbit antiserum by affinity-chromatography using epitope-specific immunogen.
Tested Applications	ELISA,WB;WB:1:500-1:3000
Form	Supplied at 1.0mg/mL in phosphate buffered saline (without Mg ²⁺ and Ca ²⁺), pH 7.4, 150mM NaCl, 0.02% sodium azide and 50% glycerol.
Purification Method	Antibodies were produced by immunizing rabbits with synthetic peptide and KLH conjugates. Antibodies were purified by affinity-chromatography using epitope-specific peptide.
Clonality	Polyclonal
Alias	PR52A; PR55A; B55A; B55ALPHA;
Product Type	Polyclonal Antibody
Immunogen Species	Homo sapiens (Human)
Target Names	PPP2CA

Image



Western blot analysis of extracts from C6 cells using PP2A-alpha antibody.



Western blot analysis of extracts from 293T, A431 and BT474 cells using PP2A-alpha antibody.



Usage

For Research Use Only. Not for use in diagnostic or therapeutic procedures.