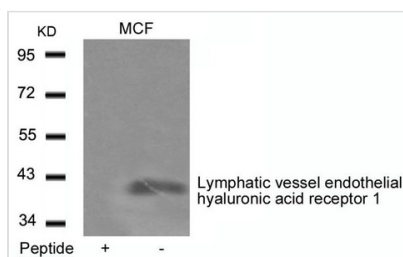




LYVE1 Antibody

Product Code	CSB-PA566878
Storage	Upon receipt, store at -20°C or -80°C. Avoid repeated freeze.
Uniprot No.	Q9Y5Y7
Immunogen	Peptide sequence around aa.271~275 (K-N-Q-Q-K) derived from Human Lymphatic vessel endothelial hyaluronic acid receptor 1.
Raised In	Rabbit
Species Reactivity	Human,Mouse,Rat
Specificity	The antibody detects endogenous level of total Lymphatic vessel endothelial hyaluronic acid receptor 1 protein.
Tested Applications	ELISA,WB;WB:1:500-1:1000
Form	Supplied at 1.0mg/mL in phosphate buffered saline (without Mg ²⁺ and Ca ²⁺), pH 7.4, 150mM NaCl, 0.02% sodium azide and 50% glycerol.
Purification Method	Antibodies were produced by immunizing rabbits with synthetic peptide and KLH conjugates. Antibodies were purified by affinity-chromatography using epitope-specific peptide.
Clonality	Polyclonal
Alias	LYVE1
Product Type	Polyclonal Antibody
Immunogen Species	Homo sapiens (Human)
Target Names	LYVE1

Image



Western blot analysis of extracts from MCF cells using Lymphatic vessel endothelial hyaluronic acid receptor 1 Antibody and the same antibody preincubated with blocking peptide.

Usage

For Research Use Only. Not for use in diagnostic or therapeutic procedures.