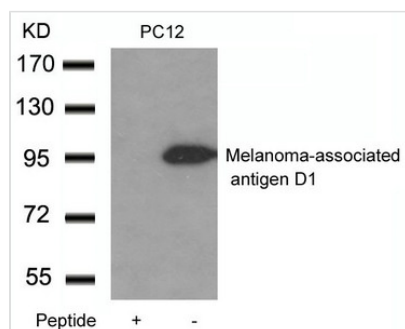




Maged1 Antibody

Product Code	CSB-PA234148
Storage	Upon receipt, store at -20°C or -80°C. Avoid repeated freeze.
Uniprot No.	Q9QYH6
Immunogen	Peptide with sequence C-EAEARAEARNRMGIGDE derived from Mouse Melanoma-associated antigen D1.
Raised In	Rabbit
Species Reactivity	Mouse,Rat
Specificity	The antibody detects endogenous level of total Melanoma-associated antigen D1 protein.
Tested Applications	ELISA,WB;WB:1:500-1:1000
Form	Supplied at 1.0mg/mL in phosphate buffered saline (without Mg ²⁺ and Ca ²⁺), pH 7.4, 150mM NaCl, 0.02% sodium azide and 50% glycerol.
Purification Method	Antibodies were produced by immunizing rabbits with synthetic peptide and KLH conjugates. Antibodies were purified by affinity-chromatography using epitope-specific peptide.
Clonality	Polyclonal
Alias	MAGED1
Product Type	Polyclonal Antibody
Immunogen Species	Mus musculus (Mouse)
Target Names	Maged1

Image



Western blot analysis of extracts from PC12 cells using Melanoma-associated antigen D1 Antibody and the same antibody preincubated with blocking peptide.