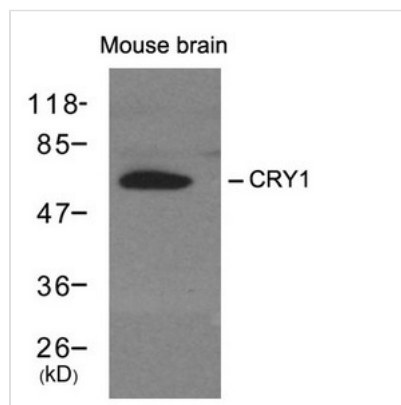




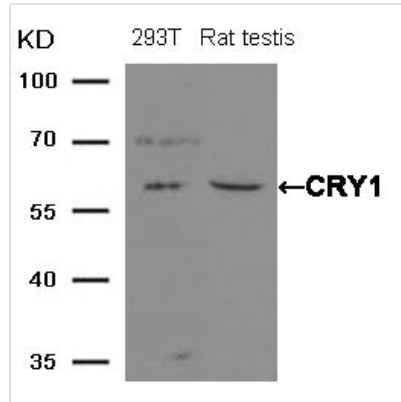
CRY1 Antibody

Product Code	CSB-PA096933
Storage	Upon receipt, store at -20°C or -80°C. Avoid repeated freeze.
Uniprot No.	Q16526
Immunogen	Peptide sequence around aa.551~555 (S-Q-G-S-G) derived from Human CRY1.
Raised In	Rabbit
Species Reactivity	Mouse
Specificity	The antibody detects endogenous level of total CRY1 protein.
Tested Applications	ELISA,WB;WB:1:500-1:3000
Form	Supplied at 1.0mg/mL in phosphate buffered saline (without Mg ²⁺ and Ca ²⁺), pH 7.4, 150mM NaCl, 0.02% sodium azide and 50% glycerol.
Purification Method	Antibodies were produced by immunizing rabbits with synthetic peptide and KLH conjugates. Antibodies were purified by affinity-chromatography using epitope-specific peptide.
Clonality	Polyclonal
Alias	PHLL1
Product Type	Polyclonal Antibody
Immunogen Species	Homo sapiens (Human)
Target Names	CRY1

Image



Western blot analysis of extracts from mouse brain tissue using CRY1 antibody.



Western blot analysis of extracts from 293T cells and Rat testis tissue using CRY1 Antibody.

Usage

For Research Use Only. Not for use in diagnostic or therapeutic procedures.