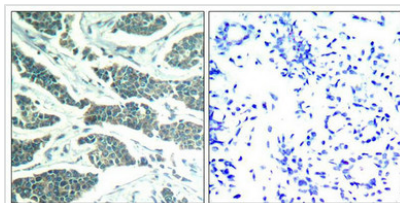




AKT1/AKT2/AKT3 (Ab-315/316/312) Antibody

Product Code	CSB-PA054234
Storage	Upon receipt, store at -20°C or -80°C. Avoid repeated freeze.
Uniprot No.	P31749/P31751/Q9Y243
Immunogen	Peptide sequence around aa.313~317/314~318/310~314 (P-E-Y-L-A) derived from Human AKT1/AKT2/AKT3.
Raised In	Rabbit
Species Reactivity	Human,Mouse,Rat
Specificity	The antibody detects endogenous level of total AKT1/AKT2/AKT3 protein.
Tested Applications	ELISA,IHC;IHC:1:50-1:100
Form	Supplied at 1.0mg/mL in phosphate buffered saline (without Mg ²⁺ and Ca ²⁺), pH 7.4, 150mM NaCl, 0.02% sodium azide and 50% glycerol.
Purification Method	Antibodies were produced by immunizing rabbits with synthetic peptide and KLH conjugates. Antibodies were purified by affinity-chromatography using epitope-specific peptide.
Clonality	Polyclonal
Alias	RAC-PK-alpha; Protein kinase B;
Product Type	Polyclonal Antibody
Immunogen Species	Homo sapiens (Human)
Target Names	AKT1/AKT2/AKT3

Image



Immunohistochemical analysis of paraffin-embedded human breast carcinoma tissue using AKT1/AKT2/AKT3(Ab-315/316/312) Antibody(left) or the same antibody preincubated with blocking peptide(right).

Usage For Research Use Only. Not for use in diagnostic or therapeutic procedures.