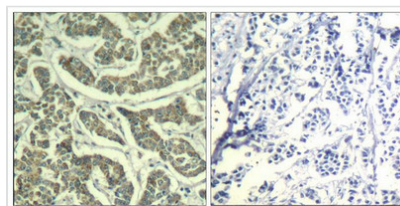




# ATR (Ab-428) Antibody

|                            |   |
|----------------------------|---|
| <b>Product Code</b>        | CSB-PA267100  |
| <b>Storage</b>             | Upon receipt, store at -20°C or -80°C. Avoid repeated freeze.   |
| <b>Uniprot No.</b>         | Q13535  |
| <b>Immunogen</b>           | Peptide sequence around aa.426~430 (G-I-S-P-K) derived from Human ATR.  |
| <b>Raised In</b>           | Rabbit  |
| <b>Species Reactivity</b>  | Human   |
| <b>Specificity</b>         | The antibody detects endogenous level of total ATR protein.   |
| <b>Tested Applications</b> | ELISA,IHC;IHC:1:50-1:100  |
| <b>Form</b>                | Supplied at 1.0mg/mL in phosphate buffered saline (without Mg <sup>2+</sup> and Ca <sup>2+</sup> ), pH 7.4, 150mM NaCl, 0.02% sodium azide and 50% glycerol.                  |
| <b>Purification Method</b> | Antibodies were produced by immunizing rabbits with synthetic peptide and KLH conjugates. Antibodies were purified by affinity-chromatography using epitope-specific peptide. |
| <b>Clonality</b>           | Polyclonal  |
| <b>Alias</b>               | FRP1; MEC1; SCKL; SCKL1;  |
| <b>Product Type</b>        | Polyclonal Antibody   |
| <b>Immunogen Species</b>   | Homo sapiens (Human)  |
| <b>Target Names</b>        | ATR   |

## Image



Immunohistochemical analysis of paraffin-embedded human breast carcinoma tissue using ATR(Ab-428) Antibody(left) or the same antibody preincubated with blocking peptide(right).

**Usage** For Research Use Only. Not for use in diagnostic or therapeutic procedures.