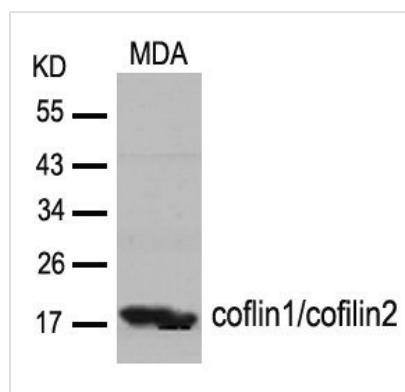




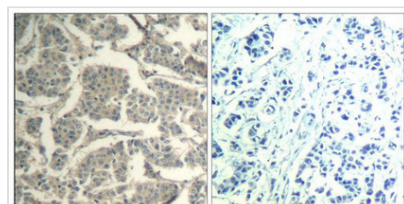
CFL1/CFL2 (Ab-88) Antibody

Product Code	CSB-PA915136
Storage	Upon receipt, store at -20°C or -80°C. Avoid repeated freeze.
Uniprot No.	P23528/Q9Y281
Immunogen	Peptide sequence around aa. 86~90 (A-T-Y-E-T) derived from Human cofilin1/cofilin2.
Raised In	Rabbit
Species Reactivity	Human,Mouse
Specificity	The antibody detects endogenous level of total cofilin1/cofilin2 protein.
Tested Applications	ELISA,WB,IHC,IF;WB:1:500-1:1000,IHC:1:50-1:200,IF:1:100-1:200
Form	Supplied at 1.0mg/mL in phosphate buffered saline (without Mg2+ and Ca2+), pH 7.4, 150mM NaCl, 0.02% sodium azide and 50% glycerol.
Purification Method	Antibodies were produced by immunizing rabbits with synthetic peptide and KLH conjugates. Antibodies were purified by affinity-chromatography using epitope-specific peptide.
Clonality	Polyclonal
Alias	Cofilin; non-muscle isoform 18 kDa phosphoprotein;
Product Type	Polyclonal Antibody
Immunogen Species	Homo sapiens (Human)
Target Names	CFL1/CFL2

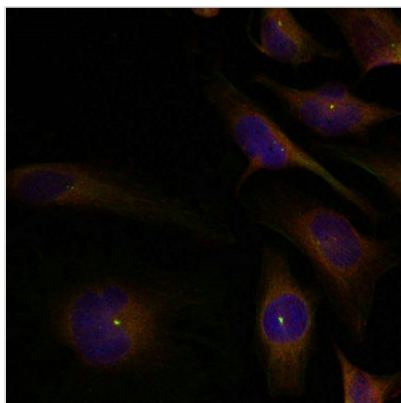
Image



Western blot analysis of extracts from MDA cells using cofilin1/cofilin2(Ab-88) Antibody.



Immunohistochemical analysis of paraffin-embedded human breast carcinoma tissue using cofilin1/cofilin2(Ab-88) Antibody(left) or the same antibody preincubated with blocking peptide(right).



Immunofluorescence staining of methanol-fixed HeLa cells using cofilin1/2(Ab-88) Antibody.