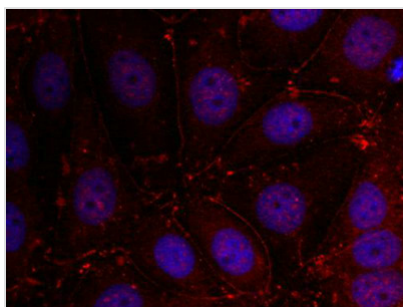




# ERBB3 (Ab-1289) Antibody

<b>Product Code</b>	CSB-PA926047
<b>Storage</b>	Upon receipt, store at -20°C or -80°C. Avoid repeated freeze.
<b>Uniprot No.</b>	P21860
<b>Immunogen</b>	Peptide sequence around aa.1287~1291 (Q-G-Y-E-E) derived from Human Her3/ErbB3.
<b>Raised In</b>	Rabbit
<b>Species Reactivity</b>	Human
<b>Specificity</b>	The antibody detects endogenous level of total Her3/ErbB3 protein.
<b>Tested Applications</b>	ELISA,IF;IF:1:100-1:200
<b>Form</b>	Supplied at 1.0mg/mL in phosphate buffered saline (without Mg <sup>2+</sup> and Ca <sup>2+</sup> ), pH 7.4, 150mM NaCl, 0.02% sodium azide and 50% glycerol.
<b>Purification Method</b>	Antibodies were produced by immunizing rabbits with synthetic peptide and KLH conjugates. Antibodies were purified by affinity-chromatography using epitope-specific peptide.
<b>Clonality</b>	Polyclonal
<b>Alias</b>	Tyrosine kinase-type cell surface receptor HER3
<b>Product Type</b>	Polyclonal Antibody
<b>Immunogen Species</b>	Homo sapiens (Human)
<b>Target Names</b>	ERBB3

## Image



Immunofluorescence staining of methanol-fixed MCF cells using Her3/ErbB3(Ab-1289) Antibody.

**Usage** For Research Use Only. Not for use in diagnostic or therapeutic procedures.