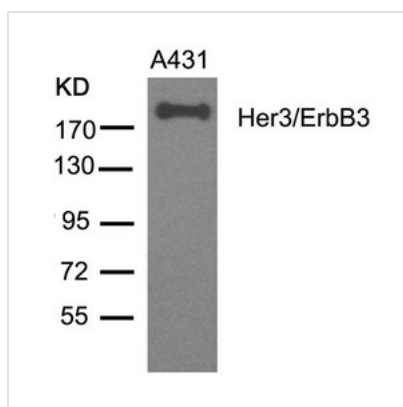




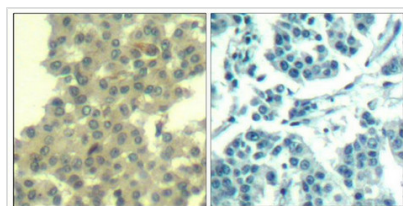
ERBB3 (Ab-1328) Antibody

| | |
|----------------------------|---|
| Product Code | CSB-PA787403 |
| Storage | Upon receipt, store at -20°C or -80°C. Avoid repeated freeze. |
| Uniprot No. | P21860 |
| Immunogen | Peptide sequence around aa. 1326~1330 (P-D-Y-W-H) derived from Human Her3/ErbB3. |
| Raised In | Rabbit |
| Species Reactivity | Human,Mouse,Rat |
| Specificity | The antibody detects endogenous level of total Her3/ErbB3 protein. |
| Tested Applications | ELISA,WB,IHC;WB:1:500-1:1000,IHC:1:50-1:200 |
| Form | Supplied at 1.0mg/mL in phosphate buffered saline (without Mg ²⁺ and Ca ²⁺), pH 7.4, 150mM NaCl, 0.02% sodium azide and 50% glycerol. |
| Purification Method | Antibodies were produced by immunizing rabbits with synthetic peptide and KLH conjugates. Antibodies were purified by affinity-chromatography using epitope-specific peptide. |
| Clonality | Polyclonal |
| Alias | Tyrosine kinase-type cell surface receptor HER3 |
| Product Type | Polyclonal Antibody |
| Immunogen Species | Homo sapiens (Human) |
| Target Names | ERBB3 |

Image



Western blot analysis of extracts from A431 cells using Her3/ErbB3(Ab-1328) Antibody.



Immunohistochemical analysis of paraffin-embedded human breast carcinoma tissue using Her3/ErbB3(Ab-1328) Antibody(left) or the same antibody preincubated with blocking peptide(right).