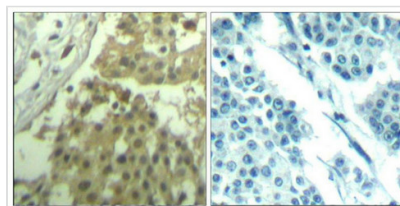




CDK1 (Ab-19) Antibody

Product Code	CSB-PA697490
Storage	Upon receipt, store at -20°C or -80°C. Avoid repeated freeze.
Uniprot No.	P06493
Immunogen	Peptide sequence around aa.17~21 (V-V-Y-K-G) derived from Human CDC2.
Raised In	Rabbit
Species Reactivity	Human,Rat
Specificity	The antibody detects endogenous level of total CDC2 protein.
Tested Applications	ELISA,IHC;IHC:1:50-1:100
Form	Supplied at 1.0mg/mL in phosphate buffered saline (without Mg ²⁺ and Ca ²⁺), pH 7.4, 150mM NaCl, 0.02% sodium azide and 50% glycerol.
Purification Method	Antibodies were produced by immunizing rabbits with synthetic peptide and KLH conjugates. Antibodies were purified by affinity-chromatography using epitope-specific peptide.
Clonality	Polyclonal
Alias	CDC28; CDC2A; CDK1; Cyclin-dependent kinase 1;
Product Type	Polyclonal Antibody
Immunogen Species	Homo sapiens (Human)
Target Names	CDK1

Image



Immunohistochemical analysis of paraffin-embedded human breast carcinoma tissue using CDC2(Ab-19) Antibody(left) or the same antibody preincubated with blocking peptide(right).

Usage For Research Use Only. Not for use in diagnostic or therapeutic procedures.