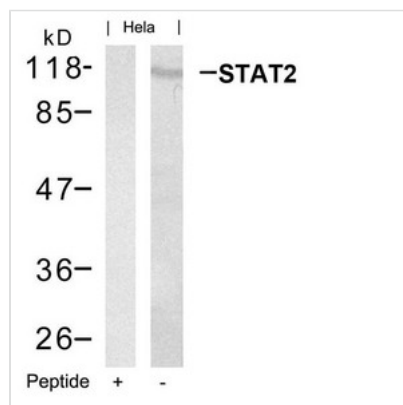




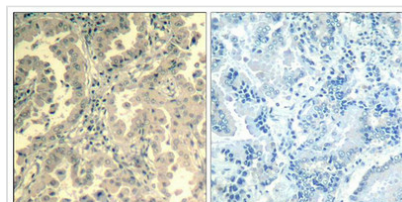
STAT2 (Ab-690) Antibody

Product Code	CSB-PA974482
Storage	Upon receipt, store at -20°C or -80°C. Avoid repeated freeze.
Uniprot No.	P52630
Immunogen	Peptide sequence around aa.688~692 (R-K-Y-L-K) derived from Human STAT2.
Raised In	Rabbit
Species Reactivity	Human
Specificity	The antibody detects endogenous level of total STAT2 protein.
Tested Applications	ELISA,WB,IHC;WB:1:500-1:1000,IHC:1:50-1:200
Form	Supplied at 1.0mg/mL in phosphate buffered saline (without Mg ²⁺ and Ca ²⁺), pH 7.4, 150mM NaCl, 0.02% sodium azide and 50% glycerol.
Purification Method	Antibodies were produced by immunizing rabbits with synthetic peptide and KLH conjugates. Antibodies were purified by affinity-chromatography using epitope-specific peptide.
Clonality	Polyclonal
Alias	P113; ISGF-3; STAT113
Product Type	Polyclonal Antibody
Immunogen Species	Homo sapiens (Human)
Target Names	STAT2

Image



Western blot analysis of extracts from HeLa cells using STAT2(Ab-690) Antibody and the same antibody preincubated with blocking peptide.



Immunohistochemical analysis of paraffin-embedded human lung carcinoma tissue using STAT2(Ab-690) Antibody(left) or the same antibody preincubated with blocking peptide(right).

Usage

For Research Use Only. Not for use in diagnostic or therapeutic procedures.