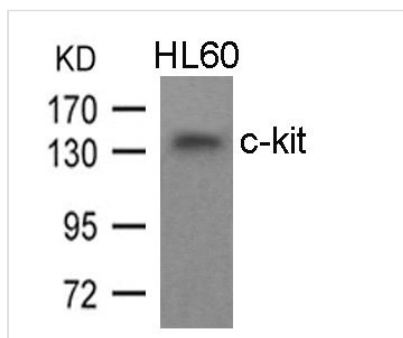




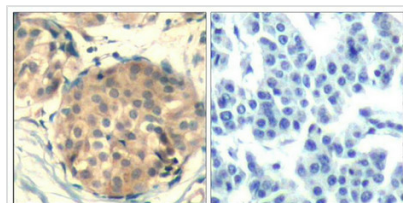
# KIT (Ab-936) Antibody

<b>Product Code</b>	CSB-PA060048
<b>Storage</b>	Upon receipt, store at -20°C or -80°C. Avoid repeated freeze.
<b>Uniprot No.</b>	P10721
<b>Immunogen</b>	Peptide sequence around aa.934~938 (H-I-Y-S-N) derived from Human c-Kit.
<b>Raised In</b>	Rabbit
<b>Species Reactivity</b>	Human
<b>Specificity</b>	The antibody detects endogenous level of total c-Kit protein.
<b>Tested Applications</b>	ELISA, WB, IHC; WB:1:500-1:1000, IHC:1:50-1:200
<b>Form</b>	Supplied at 1.0mg/mL in phosphate buffered saline (without Mg <sup>2+</sup> and Ca <sup>2+</sup> ), pH 7.4, 150mM NaCl, 0.02% sodium azide and 50% glycerol.
<b>Purification Method</b>	Antibodies were produced by immunizing rabbits with synthetic peptide and KLH conjugates. Antibodies were purified by affinity-chromatography using epitope-specific peptide.
<b>Clonality</b>	Polyclonal
<b>Alias</b>	KIT; CD117; SCFR; PBT;
<b>Product Type</b>	Polyclonal Antibody
<b>Immunogen Species</b>	Homo sapiens (Human)
<b>Target Names</b>	KIT

## Image



Western blot analysis of extracts from HL60 cells using c-kit(Ab-936) Antibody.



Immunohistochemical analysis of paraffin-embedded human breast carcinoma tissue using c-kit(Ab-936) Antibody(left) or the same antibody preincubated with blocking peptide(right).

## Usage

For Research Use Only. Not for use in diagnostic or therapeutic procedures.