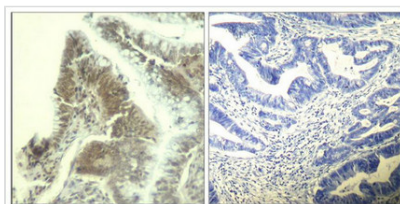




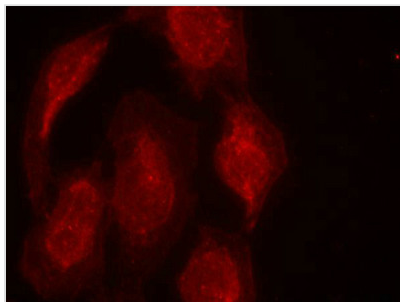
CDK6 (Ab-13) Antibody

Product Code	CSB-PA090625
Storage	Upon receipt, store at -20°C or -80°C. Avoid repeated freeze.
Uniprot No.	Q00534
Immunogen	Peptide sequence around aa.11~15 (Q-Q-Y-E-C) derived from Human CDK6.
Raised In	Rabbit
Species Reactivity	Human,Mouse
Specificity	The antibody detects endogenous level of total CDK6 protein.
Tested Applications	ELISA,IHC,IF;IHC:1:50-1:100,IF:1:100-1:200
Form	Supplied at 1.0mg/mL in phosphate buffered saline (without Mg ²⁺ and Ca ²⁺), pH 7.4, 150mM NaCl, 0.02% sodium azide and 50% glycerol.
Purification Method	Antibodies were produced by immunizing rabbits with synthetic peptide and KLH conjugates. Antibodies were purified by affinity-chromatography using epitope-specific peptide.
Clonality	Polyclonal
Alias	Serine/threonine-protein kinase PLSTIRE
Product Type	Polyclonal Antibody
Immunogen Species	Homo sapiens (Human)
Target Names	CDK6

Image



Immunohistochemical analysis of paraffin-embedded human colon carcinoma tissue using CDK6(Ab-13) Antibody(left) or the same antibody preincubated with blocking peptide(right).



Immunofluorescence staining of methanol-fixed HeLa cells using CDK6(Ab-13) Antibody.