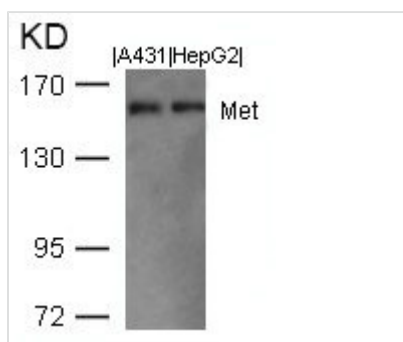




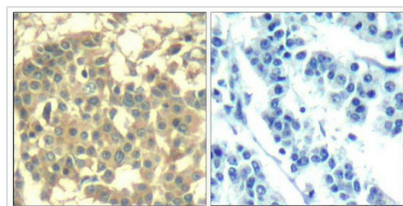
MET (Ab-1003) Antibody

Product Code	CSB-PA562889
Storage	Upon receipt, store at -20°C or -80°C. Avoid repeated freeze.
Uniprot No.	P08581
Immunogen	Peptide sequence around aa. 1001~1005 (V-D-Y-R-A) derived from Human Met.
Raised In	Rabbit
Species Reactivity	Human,Mouse,Rat
Specificity	The antibody detects endogenous level of total Met protein.
Tested Applications	ELISA,WB,IHC;WB:1:500-1:1000,IHC:1:50-1:200
Form	Supplied at 1.0mg/mL in phosphate buffered saline (without Mg ²⁺ and Ca ²⁺), pH 7.4, 150mM NaCl, 0.02% sodium azide and 50% glycerol.
Purification Method	Antibodies were produced by immunizing rabbits with synthetic peptide and KLH conjugates. Antibodies were purified by affinity-chromatography using epitope-specific peptide.
Clonality	Polyclonal
Alias	Scatter factor receptor
Product Type	Polyclonal Antibody
Immunogen Species	Homo sapiens (Human)
Target Names	MET

Image



Western blot analysis of extracts from A431 and HepG2 cells using Met(Ab-1003) Antibody.



Immunohistochemical analysis of paraffin-embedded human breast carcinoma tissue using Met(Ab-1003) Antibody(left) or the same antibody preincubated with blocking peptide(right).

Usage

For Research Use Only. Not for use in diagnostic or therapeutic procedures.