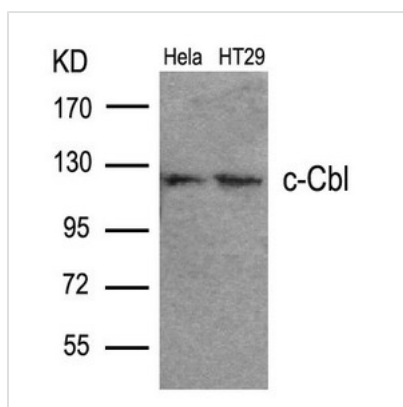




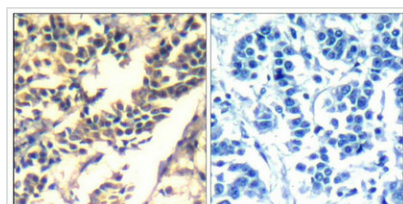
CBL (Ab-700) Antibody

Product Code	CSB-PA932513
Storage	Upon receipt, store at -20°C or -80°C. Avoid repeated freeze.
Uniprot No.	P22681
Immunogen	Peptide sequence around aa. 698~702 (T-E-Y-M-T) derived from Human c-Cbl.
Raised In	Rabbit
Species Reactivity	Human
Specificity	The antibody detects endogenous level of total c-Cbl protein.
Tested Applications	ELISA,WB,IHC;WB:1:500-1:1000,IHC:1:50-1:200
Form	Supplied at 1.0mg/mL in phosphate buffered saline (without Mg ²⁺ and Ca ²⁺), pH 7.4, 150mM NaCl, 0.02% sodium azide and 50% glycerol.
Purification Method	Antibodies were produced by immunizing rabbits with synthetic peptide and KLH conjugates. Antibodies were purified by affinity-chromatography using epitope-specific peptide.
Clonality	Polyclonal
Alias	Signal transduction protein CBL; Proto-oncogene c-CBL; Casitas B-lineage lymphoma proto-oncogene; RING finger protein 55;
Product Type	Polyclonal Antibody
Immunogen Species	Homo sapiens (Human)
Target Names	CBL

Image



Western blot analysis of extracts from HeLa and HT29 cells using c-Cbl(Ab-700) Antibody.



Immunohistochemical analysis of paraffin-embedded human breast carcinoma tissue using c-Cbl(Ab-700) Antibody(left) or the same antibody preincubated with blocking peptide(right).

Usage

For Research Use Only. Not for use in diagnostic or therapeutic procedures.