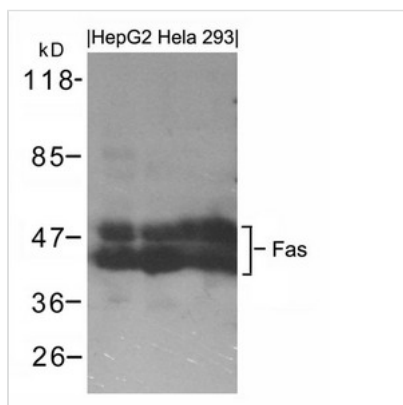




FAS Antibody

Product Code	CSB-PA146193
Storage	Upon receipt, store at -20°C or -80°C. Avoid repeated freeze.
Uniprot No.	P25445
Immunogen	Peptide sequence around aa.323~327 (E-N-S-N-F) derived from Human Fas .
Raised In	Rabbit
Species Reactivity	Human
Specificity	The antibody detects endogenous level of total Fas protein.
Tested Applications	ELISA,WB;WB:1:500-1:1000
Form	Supplied at 1.0mg/mL in phosphate buffered saline (without Mg ²⁺ and Ca ²⁺), pH 7.4, 150mM NaCl, 0.02% sodium azide and 50% glycerol.
Purification Method	Antibodies were produced by immunizing rabbits with synthetic peptide and KLH conjugates. Antibodies were purified by affinity-chromatography using epitope-specific peptide.
Clonality	Polyclonal
Alias	FASLG receptor; Apoptosis-mediating surface antigen FAS; Apo-1 antigen
Product Type	Polyclonal Antibody
Immunogen Species	Homo sapiens (Human)
Target Names	FAS

Image



Western blot analysis of extracts from HepG2, HeLa and 293 cells using Fas Antibody.

Usage

For Research Use Only. Not for use in diagnostic or therapeutic procedures.