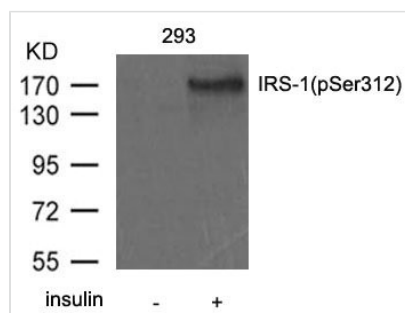




Phospho-IRS1 (Ser312) Antibody

Product Code	CSB-PA174165
Storage	Upon receipt, store at -20°C or -80°C. Avoid repeated freeze.
Uniprot No.	P35568
Immunogen	Peptide sequence around phosphorylation site of serine 312 (A-T-S(p)-P-A) derived from Human IRS-1.
Raised In	Rabbit
Species Reactivity	Human,Mouse,Rat
Specificity	The antibody detects endogenous levels of IRS-1 only when phosphorylated at serine 312.
Tested Applications	ELISA,WB;WB:1:500-1:1000
Form	Supplied at 1.0mg/mL in phosphate buffered saline (without Mg ²⁺ and Ca ²⁺), pH 7.4, 150mM NaCl, 0.02% sodium azide and 50% glycerol.
Purification Method	Antibodies were produced by immunizing rabbits with synthetic peptide and KLH conjugates. Antibodies were purified by affinity-chromatography using epitope-specific peptide.
Clonality	Polyclonal
Alias	HIRS-1; IRS1; Insulin receptor substrate 1
Product Type	Polyclonal Antibody
Immunogen Species	Homo sapiens (Human)
Target Names	IRS1

Image



Western blot analysis of extract from 293 cells untreated or treated with insulin using IRS-1(Phospho-Ser312) antibody.

Product Modify Phospho-Ser312