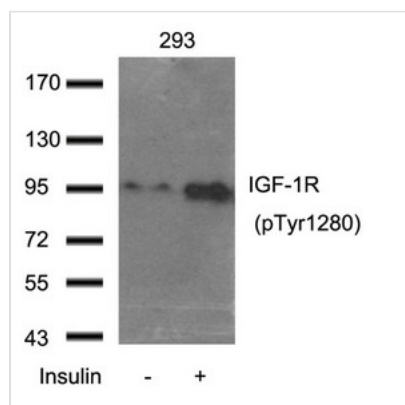




Phospho-IGF1R (Tyr1280) Antibody

| | |
|----------------------------|---|
| Product Code | CSB-PA449888 |
| Storage | Upon receipt, store at -20°C or -80°C. Avoid repeated freeze. |
| Uniprot No. | P08069 |
| Immunogen | Peptide sequence around phosphorylation site of tyrosine 1280 (S-F-Y(p)-Y-S) derived from Human IGF-1R |
| Raised In | Rabbit |
| Species Reactivity | Human |
| Specificity | The antibody detects endogenous levels of IGF-1R only when phosphorylated at tyrosine 1280. |
| Tested Applications | ELISA, WB; WB: 1:500-1:1000 |
| Form | Supplied at 1.0mg/mL in phosphate buffered saline (without Mg ²⁺ and Ca ²⁺), pH 7.4, 150mM NaCl, 0.02% sodium azide and 50% glycerol. |
| Purification Method | Antibodies were produced by immunizing rabbits with synthetic peptide and KLH conjugates. Antibodies were purified by affinity-chromatography using epitope-specific peptide. |
| Clonality | Polyclonal |
| Alias | IGFR; CD221; IGFR |
| Product Type | Polyclonal Antibody |
| Immunogen Species | Homo sapiens (Human) |
| Target Names | IGF1R |

Image



Western blot analysis of extract from 293 cells using IGF-1R(Phospho-Tyr1280) Antibody.

| | |
|-----------------------|-----------------|
| Product Modify | Phospho-Tyr1280 |
|-----------------------|-----------------|