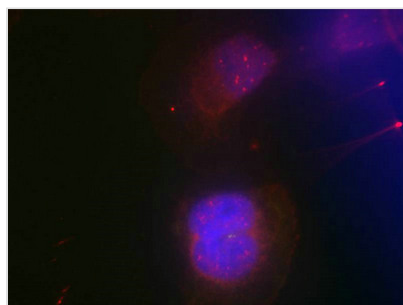




Phospho-BRCA1 (Ser988) Antibody

Product Code	CSB-PA901818
Storage	Upon receipt, store at -20°C or -80°C. Avoid repeated freeze.
Uniprot No.	P38398
Immunogen	Peptide sequence around phosphorylation site of serine 988 (I-K-S(p)-F-V) derived from Human BRCA1.
Raised In	Rabbit
Species Reactivity	Human
Specificity	The antibody detects endogenous level of BRCA1 only when phosphorylated at serine 988.
Tested Applications	ELISA,IF;IF:1:100-1:200
Form	Supplied at 1.0mg/mL in phosphate buffered saline (without Mg ²⁺ and Ca ²⁺), pH 7.4, 150mM NaCl, 0.02% sodium azide and 50% glycerol.
Purification Method	Antibodies were produced by immunizing rabbits with synthetic phosphopeptide and KLH conjugates. Antibodies were purified by affinity-chromatography using epitope-specific phosphopeptide. Non-phospho specific antibodies were removed by chromatography
Clonality	Polyclonal
Alias	RNF53
Product Type	Polyclonal Antibody
Immunogen Species	Homo sapiens (Human)
Target Names	BRCA1

Image



Immunofluorescence staining of methanol-fixed HeLa cells using BRCA1(Phospho-Ser988) Antibody.

Product Modify Phospho-Ser988