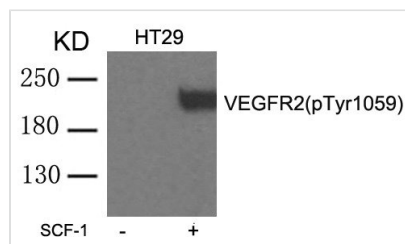




# Phospho-KDR (Tyr1059) Antibody

<b>Product Code</b>	CSB-PA444815
<b>Storage</b>	Upon receipt, store at -20°C or -80°C. Avoid repeated freeze.
<b>Uniprot No.</b>	P35968
<b>Immunogen</b>	Peptide sequence around phosphorylation site of tyrosine 1059 (P-D-Y(p)-V-R) derived from Human VEGFR2.
<b>Raised In</b>	Rabbit
<b>Species Reactivity</b>	Human, Mouse
<b>Specificity</b>	The antibody detects endogenous level of VEGFR2 only when phosphorylated at Tyrosine 1059.
<b>Tested Applications</b>	ELISA, WB; WB: 1:500-1:1000
<b>Form</b>	Supplied at 1.0mg/mL in phosphate buffered saline (without Mg <sup>2+</sup> and Ca <sup>2+</sup> ), pH 7.4, 150mM NaCl, 0.02% sodium azide and 50% glycerol.
<b>Purification Method</b>	Antibodies were produced by immunizing rabbits with synthetic phosphopeptide and KLH conjugates. Antibodies were purified by affinity-chromatography using epitope-specific phosphopeptide. Non-phospho specific antibodies were removed by chromatography using
<b>Clonality</b>	Polyclonal
<b>Alias</b>	FLK1; CD309; VEGFR; KDR;
<b>Product Type</b>	Polyclonal Antibody
<b>Immunogen Species</b>	Homo sapiens (Human)
<b>Target Names</b>	KDR

## Image



Western blot analysis of extracts from HT29 cells untreated or treated with SCF-1 using VEGFR2(phospho-Tyr1059) Antibody.

**Product Modify** Phospho-Tyr1059