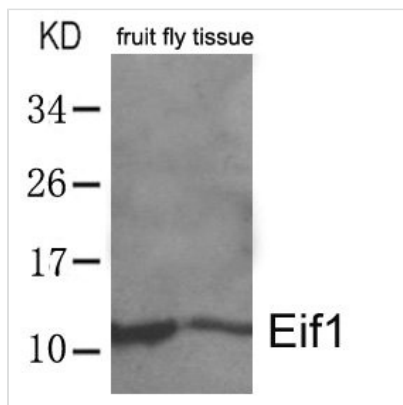




EIF1 Antibody

Product Code	CSB-PA022391
Storage	Upon receipt, store at -20°C or -80°C. Avoid repeated freeze.
Uniprot No.	P41567
Immunogen	Peptide sequence around aa. 4~8 (Q-N-L-N-T) derived from Drosophila Eif1
Raised In	Rabbit
Species Reactivity	Drosophila melanogaster
Tested Applications	ELISA, WB; WB: 1:500-1:1000
Form	Liquid
Purification Method	Antibodies were produced by immunizing rabbits with synthetic peptide and KLH conjugates. Antibodies were purified by affinity-chromatography using epitope-specific peptide.
Clonality	Polyclonal
Product Type	Polyclonal Antibody
Immunogen Species	Drosophila melanogaster
Target Names	EIF1

Image



Western blot analysis of extracts from whole fruit fly (drosophila melanogaster) tissue lysate using Eif1 Antibody.

Usage

For Research Use Only. Not for use in diagnostic or therapeutic procedures.