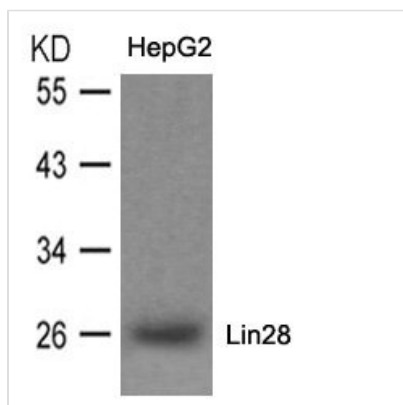




LIN28A Antibody

Product Code	CSB-PA586531
Storage	Upon receipt, store at -20°C or -80°C. Avoid repeated freeze.
Uniprot No.	Q9H9Z2
Immunogen	Peptide sequence around aa. 1~5 (M-G-S-V-S) derived from Human Lin28
Raised In	Rabbit
Species Reactivity	Human,Mouse,Rat
Specificity	The antibody detects endogenous levels of total Lin28 protein.
Tested Applications	ELISA,WB;WB:1:500-1:1000
Form	Supplied at 1.0mg/mL in phosphate buffered saline (without Mg ²⁺ and Ca ²⁺), pH 7.4, 150mM NaCl, 0.02% sodium azide and 50% glycerol.
Purification Method	Antibodies were produced by immunizing rabbits with synthetic peptide and KLH conjugates. Antibodies were purified by affinity-chromatography using epitope-specific peptide.
Clonality	Polyclonal
Alias	CSDD1; LIN-28; LIN28A; ZCCHC1;
Product Type	Polyclonal Antibody
Immunogen Species	Homo sapiens (Human)
Target Names	LIN28A

Image



Western blot analysis of extracts from HepG2 cells using Lin28 Antibody.

Usage

For Research Use Only. Not for use in diagnostic or therapeutic procedures.