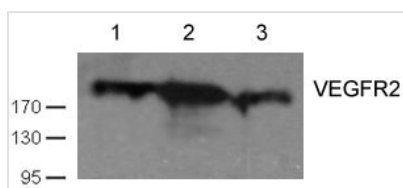




KDR (Ab-1059) Antibody

Product Code	CSB-PA070091
Storage	Upon receipt, store at -20°C or -80°C. Avoid repeated freeze.
Uniprot No.	P35968
Immunogen	Peptide sequence around aa. 1057~1061 (P-D-Y-V-R) derived from Human VEGFR2.
Raised In	Rabbit
Species Reactivity	Human,Mouse
Specificity	The antibody detects endogenous levels of total VEGFR2 protein.
Tested Applications	ELISA,WB;WB:1:500-1:1000
Form	Supplied at 1.0mg/mL in phosphate buffered saline (without Mg ²⁺ and Ca ²⁺), pH 7.4, 150mM NaCl, 0.02% sodium azide and 50% glycerol.
Purification Method	Antibodies were produced by immunizing rabbits with synthetic peptide and KLH conjugates. Antibodies were purified by affinity-chromatography using epitope-specific peptide.
Clonality	Polyclonal
Alias	FLK1; KDR; VGFR2; VGR2; kinase insert domain receptor
Product Type	Polyclonal Antibody
Immunogen Species	Homo sapiens (Human)
Target Names	KDR

Image



Western blot analysis of cell lysates using VEGFR2(Ab-1059) antibody Lane 1 and 2: Huvec cell; Lane 3 HT29 cell)

Usage

For Research Use Only. Not for use in diagnostic or therapeutic procedures.