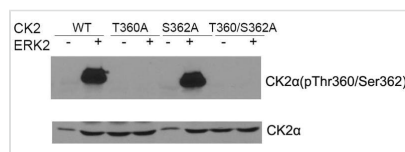




CSNK2A1 Antibody

Product Code	CSB-PA986642
Storage	Upon receipt, store at -20°C or -80°C. Avoid repeated freeze.
Uniprot No.	P68400
Immunogen	Peptide sequence around aa. 353~357 (C-S-G-I-S) derived from Human CK2a.
Raised In	Rabbit
Species Reactivity	Human,Mouse,Rat
Specificity	The antibody detects endogenous levels of total CK2 protein.
Tested Applications	ELISA,WB;WB:1:500-1:1000
Form	Supplied at 1.0mg/mL in phosphate buffered saline (without Mg ²⁺ and Ca ²⁺), pH 7.4, 150mM NaCl, 0.02% sodium azide and 50% glycerol.
Purification Method	Antibodies were produced by immunizing rabbits with synthetic peptide and KLH conjugates. Antibodies were purified by affinity-chromatography using epitope-specific peptide.
Clonality	Polyclonal
Alias	CKII; CK2A1; CSNK2A1
Product Type	Polyclonal Antibody
Immunogen Species	Homo sapiens (Human)
Target Names	CSNK2A1

Image



Western blot of CK2a(Phospho-Thr360/Ser362) antibody and CK2a antibody in vitro kinase assay. Both purified ERK2 and CK2 were used.

Usage

For Research Use Only. Not for use in diagnostic or therapeutic procedures.