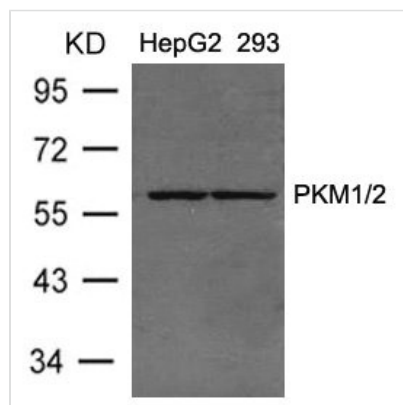




PKM Antibody

Product Code	CSB-PA794840
Storage	Upon receipt, store at -20°C or -80°C. Avoid repeated freeze.
Uniprot No.	P14618
Immunogen	Peptide sequence around aa. 36~40(D-S-P-P-I) derived from Human PKM1/2.
Raised In	Rabbit
Species Reactivity	Human
Specificity	The antibody detects endogenous levels of total PKM1/2 protein.
Tested Applications	ELISA,WB;WB:1:500-1:1000
Form	Supplied at 1.0mg/mL in phosphate buffered saline (without Mg ²⁺ and Ca ²⁺), pH 7.4, 150mM NaCl, 0.02% sodium azide and 50% glycerol.
Purification Method	Antibodies were produced by immunizing rabbits with synthetic peptide and KLH conjugates. Antibodies were purified by affinity-chromatography using epitope-specific peptide.
Clonality	Polyclonal
Alias	PKM; PK3; OIP3; PK2;
Product Type	Polyclonal Antibody
Immunogen Species	Homo sapiens (Human)
Target Names	PKM

Image



Western blot analysis of extracts from HepG2 and 293 cells using PKM1/2 Antibody.