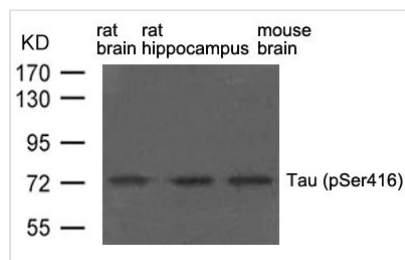




# Phospho-MAPT (Ser416) Antibody

<b>Product Code</b>	CSB-PA050509
<b>Storage</b>	Upon receipt, store at -20°C or -80°C. Avoid repeated freeze.
<b>Uniprot No.</b>	P10636
<b>Immunogen</b>	Peptide sequence around phosphorylation site of serine 416 (T-G-S(p)-I-D) derived from Human Tau.
<b>Raised In</b>	Rabbit
<b>Species Reactivity</b>	Human,Rat,Mouse
<b>Specificity</b>	The antibody detects endogenous levels of Tau only when phosphorylated at serine 416.
<b>Tested Applications</b>	ELISA,WB;WB:1:500-1:1000
<b>Form</b>	Supplied at 1.0mg/mL in phosphate buffered saline (without Mg <sup>2+</sup> and Ca <sup>2+</sup> ), pH 7.4, 150mM NaCl, 0.02% sodium azide and 50% glycerol.
<b>Purification Method</b>	Antibodies were produced by immunizing rabbits with synthetic phosphopeptide and KLH conjugates. Antibodies were purified by affinity-chromatography using epitope-specific phosphopeptide. Non-phospho specific antibodies were removed by chromatography using
<b>Clonality</b>	Polyclonal
<b>Alias</b>	MAPT; MTAPT; MTBT1; Neurofibrillary tangle protein; PHF-tau
<b>Product Type</b>	Polyclonal Antibody
<b>Immunogen Species</b>	Homo sapiens (Human)
<b>Target Names</b>	MAPT

## Image



Western blot analysis of extract from rat brain, rat hippocampus and mouse brain using Tau(phospho-Ser416) Antibody.

<b>Product Modify</b>	Phospho-Ser416
-----------------------	----------------