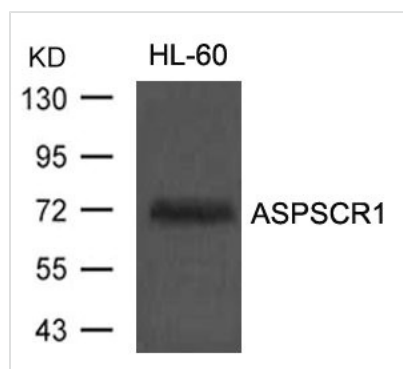




ASPSCR1 Antibody

Product Code	CSB-PA180850
Storage	Upon receipt, store at -20°C or -80°C. Avoid repeated freeze.
Uniprot No.	Q9BZE9
Immunogen	Peptide sequence around aa.303 ~307(P-Q-Q-E-Q) derived from Human ASPSCR1.
Raised In	Rabbit
Species Reactivity	Human
Specificity	The antibody detects endogenous levels of total ASPSCR1 protein.
Tested Applications	ELISA, WB; WB: 1:500-1:1000
Form	Supplied at 1.0mg/mL in phosphate buffered saline (without Mg ²⁺ and Ca ²⁺), pH 7.4, 150mM NaCl, 0.02% sodium azide and 50% glycerol.
Purification Method	Antibodies were produced by immunizing rabbits with synthetic peptide and KLH conjugates. Antibodies were purified by affinity-chromatography using epitope-specific peptide.
Clonality	Polyclonal
Alias	ASPL; RCC17; TUG; UBXD9; UBXN9
Product Type	Polyclonal Antibody
Immunogen Species	Homo sapiens (Human)
Target Names	ASPSCR1

Image



Western blot analysis of extracts from HL60 cells using ASPSCR1 Antibody.