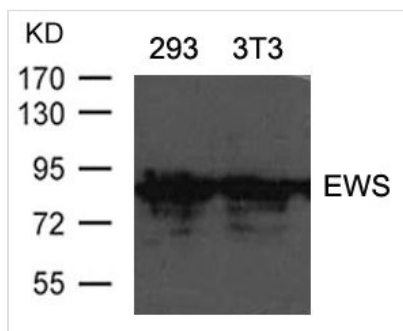




EWS Antibody

Product Code	CSB-PA883572
Storage	Upon receipt, store at -20°C or -80°C. Avoid repeated freeze.
Uniprot No.	Q9BZD1
Immunogen	Peptide sequence around aa.213~217(T-Y-G-Q-P)derived from Human EWS.
Raised In	Rabbit
Species Reactivity	Human,Mouse,Rat
Specificity	The antibody detects endogenous levels of total EWS protein.
Tested Applications	ELISA,WB;WB:1:500-1:1000
Form	Supplied at 1.0mg/mL in phosphate buffered saline (without Mg ²⁺ and Ca ²⁺), pH 7.4, 150mM NaCl, 0.02% sodium azide and 50% glycerol.
Purification Method	Antibodies were produced by immunizing rabbits with synthetic peptide and KLH conjugates. Antibodies were purified by affinity-chromatography using epitope-specific peptide.
Clonality	Polyclonal
Alias	bK984G1.4; EWSR1;
Product Type	Polyclonal Antibody
Immunogen Species	Homo sapiens (Human)
Target Names	EWS

Image



Western blot analysis of extracts from 293 and 3T3 cells using EWS Antibody.

Usage

For Research Use Only. Not for use in diagnostic or therapeutic procedures.