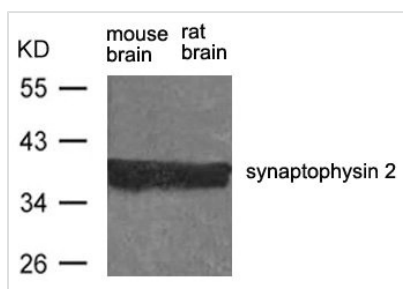




Synpr Antibody

Product Code	CSB-PA187327
Storage	Upon receipt, store at -20°C or -80°C. Avoid repeated freeze.
Uniprot No.	P22831
Immunogen	Peptide sequence around aa.257~261(G-P-T-S-F)derived from Rat synaptophysin 2.
Raised In	Rabbit
Species Reactivity	Mouse,Rat
Specificity	The antibody detects endogenous levels of total synaptophysin 2 protein.
Tested Applications	ELISA,WB;WB:1:500-1:1000
Form	Supplied at 1.0mg/mL in phosphate buffered saline (without Mg ²⁺ and Ca ²⁺), pH 7.4, 150mM NaCl, 0.02% sodium azide and 50% glycerol.
Purification Method	Antibodies were produced by immunizing rabbits with synthetic peptide and KLH conjugates. Antibodies were purified by affinity-chromatography using epitope-specific peptide.
Clonality	Polyclonal
Alias	Synpr
Product Type	Polyclonal Antibody
Immunogen Species	Rattus norvegicus (Rat)
Target Names	Synpr

Image



Western blot analysis of extract from rat brain and mouse brain using synaptophysin 2 Antibody.

Usage

For Research Use Only. Not for use in diagnostic or therapeutic procedures.