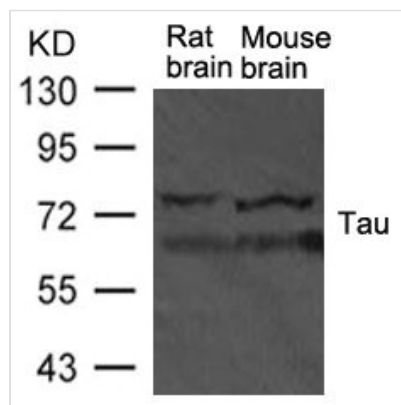




Mapt Antibody

Product Code	CSB-PA945056
Storage	Upon receipt, store at -20°C or -80°C. Avoid repeated freeze.
Uniprot No.	P19332
Immunogen	Peptide sequence around aa. 725-729(T-G-S-I-D) derived from Rat Tau
Raised In	Rabbit
Species Reactivity	Human,Mouse,Rat
Specificity	The antibody detects endogenous level of total Tau protein.
Tested Applications	ELISA,WB;WB:1:500-1:1000
Form	Supplied at 1.0mg/mL in phosphate buffered saline (without Mg ²⁺ and Ca ²⁺), pH 7.4, 150mM NaCl, 0.02% sodium azide and 50% glycerol.
Purification Method	Antibodies were produced by immunizing rabbits with synthetic peptide and KLH conjugates. Antibodies were purified by affinity-chromatography using epitope-specific peptide
Clonality	Polyclonal
Alias	MAPT; MTAPT; MTBT1; Neurofibrillary tangle protein; PHF-tau
Product Type	Polyclonal Antibody
Immunogen Species	Rattus norvegicus (Rat)
Target Names	Mapt

Image



Western blot analysis of extract from rat brain and mouse brain tissue using TAU Antibody

Usage

For Research Use Only. Not for use in diagnostic or therapeutic procedures.