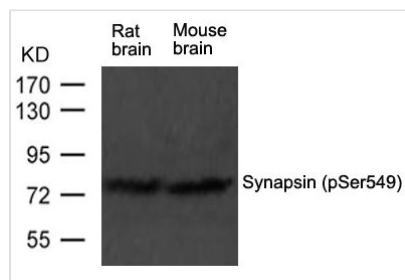




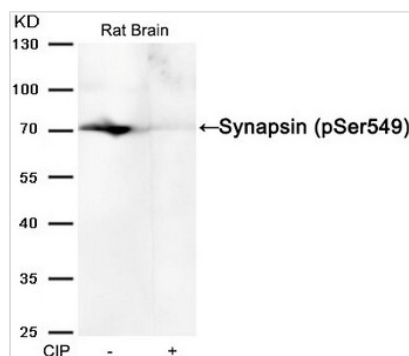
# Phospho-Syn1 (Ser549) Antibody

<b>Product Code</b>	CSB-PA216484
<b>Storage</b>	Upon receipt, store at -20°C or -80°C. Avoid repeated freeze.
<b>Uniprot No.</b>	O88935
<b>Immunogen</b>	Peptide sequence around phosphorylation site of serine 549(P-A-S(p)-P-S) derived from Rat Synapsin
<b>Raised In</b>	Rabbit
<b>Species Reactivity</b>	Human,Rat,Mouse
<b>Specificity</b>	The antibody detects endogenous level of Synapsin only when phosphorylated at serine 549.
<b>Tested Applications</b>	ELISA,WB;WB:1:500-1:1000
<b>Form</b>	Supplied at 1.0mg/mL in phosphate buffered saline (without Mg <sup>2+</sup> and Ca <sup>2+</sup> ), pH 7.4, 150mM NaCl, 0.02% sodium azide and 50% glycerol.
<b>Purification Method</b>	Antibodies were produced by immunizing rabbits with synthetic phosphopeptide and KLH conjugates. Antibodies were purified by affinity-chromatography using epitope-specific phosphopeptide. Non-phospho specific antibodies were removed by chromatography
<b>Clonality</b>	Polyclonal
<b>Alias</b>	Syn-1; synapsin I;
<b>Product Type</b>	Polyclonal Antibody
<b>Immunogen Species</b>	Mus musculus (Mouse)
<b>Target Names</b>	Syn1

## Image



Western blot analysis of extract from rat brain and mouse brain tissue using Synapsin(phospho-Ser549) Antibody using



Western blot analysis of extracts from Rat brain tissue or calf intestinal phosphatase (CIP), using Synapsin (phospho-Ser549) Antibody.



---

**Product Modify**

Phospho-Ser549

---

**Usage**

For Research Use Only. Not for use in diagnostic or therapeutic procedures.