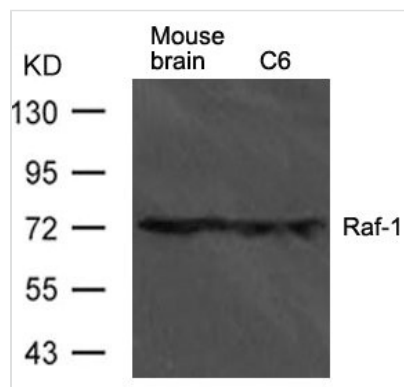




Raf1 Antibody

Product Code	CSB-PA950764
Storage	Upon receipt, store at -20°C or -80°C. Avoid repeated freeze.
Uniprot No.	P11345
Immunogen	Peptide sequence around aa. 641-645(T-S-P-R-L) derived from Rat Raf-1.
Raised In	Rabbit
Species Reactivity	Rat
Specificity	The antibody detects endogenous level of total Raf-1 protein.
Tested Applications	ELISA,WB;WB:1:500-1:1000
Form	Supplied at 1.0mg/mL in phosphate buffered saline (without Mg ²⁺ and Ca ²⁺), pH 7.4, 150mM NaCl, 0.02% sodium azide and 50% glycerol.
Purification Method	Antibodies were produced by immunizing rabbits with synthetic peptide and KLH conjugates. Antibodies were purified by affinity-chromatography using epitope-specific peptide
Clonality	Polyclonal
Alias	c-RAF; RAF proto-oncogene serine/threonine-protein kinase;
Product Type	Polyclonal Antibody
Immunogen Species	Rattus norvegicus (Rat)
Target Names	Raf1

Image



Western blot analysis of extract from mouse brain tissue and C6 cells using Raf-1 Antibody

Usage

For Research Use Only. Not for use in diagnostic or therapeutic procedures.