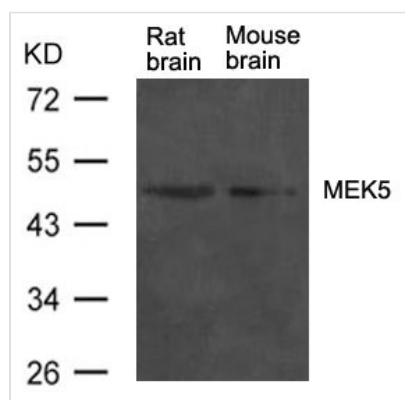




Map2k5 Antibody

Product Code	CSB-PA283905
Storage	Upon receipt, store at -20°C or -80°C. Avoid repeated freeze.
Uniprot No.	Q62862
Immunogen	Peptide sequence around aa. 311-315(K-T-Y-V-G) derived from Rat MEK5.
Raised In	Rabbit
Species Reactivity	Human,Rat,Mouse
Specificity	The antibody detects endogenous level of total MEK5 protein.
Tested Applications	ELISA,WB;WB:1:500-1:1000
Form	Supplied at 1.0mg/mL in phosphate buffered saline (without Mg ²⁺ and Ca ²⁺), pH 7.4, 150mM NaCl, 0.02% sodium azide and 50% glycerol.
Purification Method	Antibodies were produced by immunizing rabbits with synthetic peptide and KLH conjugates. Antibodies were purified by affinity-chromatography using epitope-specific peptide
Clonality	Polyclonal
Alias	MAP kinase kinase 5; Map2k5; MAPKK 5; MAPK/ERK kinase 5;
Product Type	Polyclonal Antibody
Immunogen Species	Rattus norvegicus (Rat)
Target Names	Map2k5

Image



Western blot analysis of extract from rat brain and mouse brain tissue using MEK5 Antibody