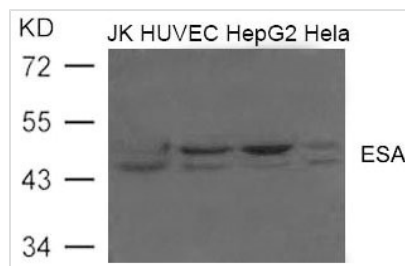




FLOT2 Antibody

Product Code	CSB-PA183922
Storage	Upon receipt, store at -20°C or -80°C. Avoid repeated freeze.
Uniprot No.	Q14254
Immunogen	Peptide sequence around aa.420~424(I-K-K-A-T) derived from Human ESA (FLOT2).
Raised In	Rabbit
Species Reactivity	Human
Specificity	The antibody detects endogenous level of total ESA (FLOT2) protein.
Tested Applications	ELISA,WB;WB:1:500-1:1000
Form	Supplied at 1.0mg/mL in phosphate buffered saline (without Mg ²⁺ and Ca ²⁺), pH 7.4, 150mM NaCl, 0.02% sodium azide and 50% glycerol.
Purification Method	Antibodies were produced by immunizing rabbits with synthetic peptide and KLH conjugates. Antibodies were purified by affinity-chromatography using epitope-specific peptide.
Clonality	Polyclonal
Alias	ECS1; ESA1; ECS-1; M17S1;
Product Type	Polyclonal Antibody
Immunogen Species	Homo sapiens (Human)
Target Names	FLOT2

Image



Western blot analysis of extract from JK, HUVEC, HepG2 and Hela cells using ESA(FLOT2) Antibody