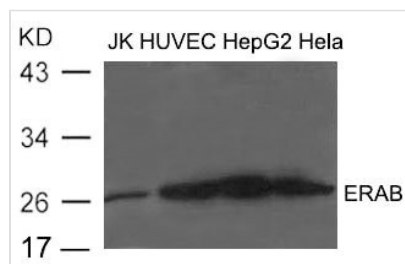




HSD17B10 Antibody

Product Code	CSB-PA695225
Storage	Upon receipt, store at -20°C or -80°C. Avoid repeated freeze.
Uniprot No.	Q99714
Immunogen	Peptide sequence around aa.253~257(L-D-G-A-I)derived from Human ERAB.
Raised In	Rabbit
Species Reactivity	Human,Mouse,Rat
Specificity	The antibody detects endogenous level of total ERAB protein.
Tested Applications	ELISA,WB;WB:1:500-1:1000
Form	Supplied at 1.0mg/mL in phosphate buffered saline (without Mg ²⁺ and Ca ²⁺), pH 7.4, 150mM NaCl, 0.02% sodium azide and 50% glycerol.
Purification Method	Antibodies were produced by immunizing rabbits with synthetic peptide and KLH conjugates. Antibodies were purified by affinity-chromatography using epitope-specific peptide.
Clonality	Polyclonal
Alias	ABAD; CAMR; HCD2; MHBD; HADH2
Product Type	Polyclonal Antibody
Immunogen Species	Homo sapiens (Human)
Target Names	HSD17B10

Image



Western blot analysis of extract from JK, HUVEC, HepG2 and Hela cells using ERAB Antibody