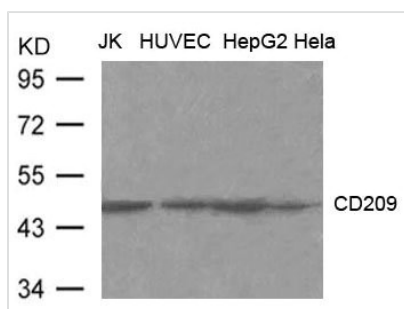




CD209 Antibody

Product Code	CSB-PA143864
Storage	Upon receipt, store at -20°C or -80°C. Avoid repeated freeze.
Uniprot No.	Q9NNX6
Immunogen	Peptide sequence around aa.389~393(E-Q-F-L-S)derived from Human CD209 (DC-SIGN).
Raised In	Rabbit
Species Reactivity	Human
Specificity	The antibody detects endogenous level of total CD209 (DC-SIGN) protein.
Tested Applications	ELISA,WB;WB:1:500-1:1000
Form	Supplied at 1.0mg/mL in phosphate buffered saline (without Mg ²⁺ and Ca ²⁺), pH 7.4, 150mM NaCl, 0.02% sodium azide and 50% glycerol.
Purification Method	Antibodies were produced by immunizing rabbits with synthetic peptide and KLH conjugates. Antibodies were purified by affinity-chromatography using epitope-specific peptide.
Clonality	Polyclonal
Alias	CDSIGN; CLEC4L; DC-SIGN
Product Type	Polyclonal Antibody
Immunogen Species	Homo sapiens (Human)
Target Names	CD209

Image



Western blot analysis of extract from JK, HUVEC, HepG2 and HeLa cells using CD209(DC-SIGN) Antibody

Usage

For Research Use Only. Not for use in diagnostic or therapeutic procedures.