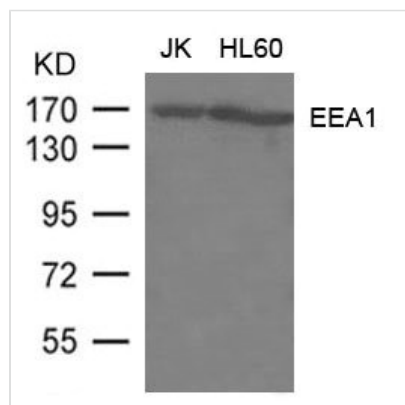




EEA1 Antibody

Product Code	CSB-PA049543
Storage	Upon receipt, store at -20°C or -80°C. Avoid repeated freeze.
Uniprot No.	Q15075
Immunogen	Peptide sequence around aa.12~16(R-V-G-S-Q)derived from Human EEA1.
Raised In	Rabbit
Species Reactivity	Human,Mouse,Rat
Specificity	The antibody detects endogenous level of total EEA1 protein.
Tested Applications	ELISA,WB;WB:1:500-1:1000
Form	Supplied at 1.0mg/mL in phosphate buffered saline (without Mg ²⁺ and Ca ²⁺), pH 7.4, 150mM NaCl, 0.02% sodium azide and 50% glycerol.
Purification Method	Antibodies were produced by immunizing rabbits with synthetic peptide and KLH conjugates. Antibodies were purified by affinity-chromatography using epitope-specific peptide.
Clonality	Polyclonal
Alias	MST105; ZFYVE2; MSTP105
Product Type	Polyclonal Antibody
Immunogen Species	Homo sapiens (Human)
Target Names	EEA1

Image



Western blot analysis of extract from JK, HL-60 cells using EEA1 Antibody