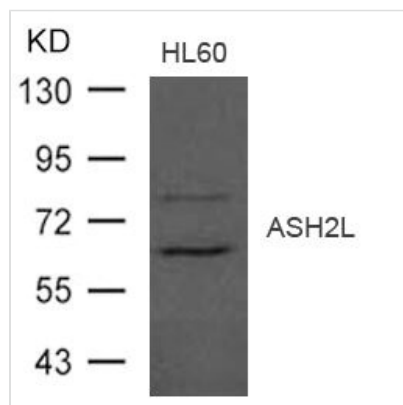




ASH2L Antibody

Product Code	CSB-PA972879
Storage	Upon receipt, store at -20°C or -80°C. Avoid repeated freeze.
Uniprot No.	Q9UBL3
Immunogen	Peptide sequence around aa.620~624(G-R-R-S-P) derived from Human ASH2L.
Raised In	Rabbit
Species Reactivity	Human,Mouse,Rat
Specificity	The antibody detects endogenous level of total ASH2L protein.
Tested Applications	ELISA,WB;WB:1:500-1:1000
Form	Supplied at 1.0mg/mL in phosphate buffered saline (without Mg ²⁺ and Ca ²⁺), pH 7.4, 150mM NaCl, 0.02% sodium azide and 50% glycerol.
Purification Method	Antibodies were produced by immunizing rabbits with synthetic peptide and KLH conjugates. Antibodies were purified by affinity-chromatography using epitope-specific peptide.
Clonality	Polyclonal
Alias	ASH2; Bre2; ASH2L1; ASH2L2;
Product Type	Polyclonal Antibody
Immunogen Species	Homo sapiens (Human)
Target Names	ASH2L

Image



Western blot analysis of extract from HL-60 cells using ASH2L Antibody

Usage

For Research Use Only. Not for use in diagnostic or therapeutic procedures.