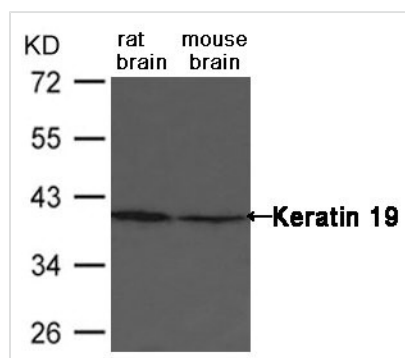




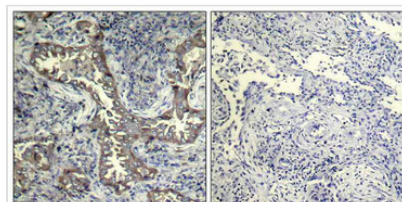
KRT19 Antibody

Product Code	CSB-PA100243
Storage	Upon receipt, store at -20°C or -80°C. Avoid repeated freeze.
Uniprot No.	P08727
Immunogen	Peptide sequence around aa.392~396(N-N-L-S-A) derived from Human Keratin 19.
Raised In	Rabbit
Species Reactivity	Human,Mouse,Rat
Specificity	The antibody detects endogenous level of total Keratin 19 protein.
Tested Applications	ELISA,WB,IHC;WB:1:500-1:3000,IHC:1:50-1:100
Form	Supplied at 1.0mg/mL in phosphate buffered saline (without Mg ²⁺ and Ca ²⁺), pH 7.4, 150mM NaCl, 0.02% sodium azide and 50% glycerol.
Purification Method	Antibodies were produced by immunizing rabbits with synthetic peptide and KLH conjugates. Antibodies were purified by affinity-chromatography using epitope-specific peptide.
Clonality	Polyclonal
Alias	K19, K1CS, MGC15366, KRT19, CK19
Product Type	Polyclonal Antibody
Immunogen Species	Homo sapiens (Human)
Target Names	KRT19

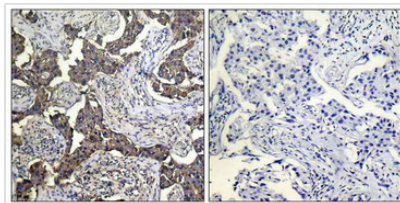
Image



Western blot analysis of extract from rat and mouse brain tissue using Keratin 19 Antibody



Immunohistochemical analysis of paraffin-embedded human breast carcinoma tissue using BAD (Phospho-Ser112) Antibody (left) or the same antibody preincubated with blocking peptide (right).



Immunohistochemical analysis of paraffin-embedded human Lung carcinoma tissue using BAD (Phospho-Ser112) Antibody (left) or the same antibody preincubated with blocking peptide (right).

Usage

For Research Use Only. Not for use in diagnostic or therapeutic procedures.