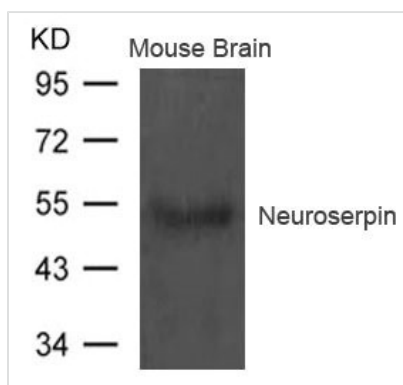




SERPINI1 Antibody

Product Code	CSB-PA869434
Storage	Upon receipt, store at -20°C or -80°C. Avoid repeated freeze.
Uniprot No.	Q99574
Immunogen	Peptide sequence around aa.402~406(T-S-G-H-D) derived from Human Neuroserpin.
Raised In	Rabbit
Species Reactivity	Human,Mouse,Rat
Specificity	The antibody detects endogenous level of total Neuroserpin protein.
Tested Applications	ELISA,WB;WB:1:500-1:1000
Form	Supplied at 1.0mg/mL in phosphate buffered saline (without Mg ²⁺ and Ca ²⁺), pH 7.4, 150mM NaCl, 0.02% sodium azide and 50% glycerol.
Purification Method	Antibodies were produced by immunizing rabbits with synthetic peptide and KLH conjugates. Antibodies were purified by affinity-chromatography using epitope-specific peptide.
Clonality	Polyclonal
Alias	PI12; SERPINI1;
Product Type	Polyclonal Antibody
Immunogen Species	Homo sapiens (Human)
Target Names	SERPINI1

Image



Western blot analysis of extract from Mouse brain tissue using Neuroserpin Antibody

Usage

For Research Use Only. Not for use in diagnostic or therapeutic procedures.