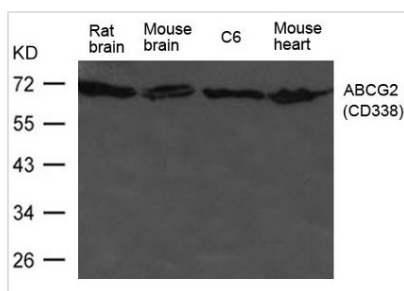




ABCG2 Antibody

Product Code	CSB-PA570300
Storage	Upon receipt, store at -20°C or -80°C. Avoid repeated freeze.
Uniprot No.	Q9UNQ0
Immunogen	Peptide sequence around aa.160~164(R-I-N-R-V) derived from Human ABCG2(CD338).
Raised In	Rabbit
Species Reactivity	Human
Specificity	The antibody detects endogenous level of total ABCG2(CD338) protein.
Tested Applications	ELISA,WB;WB:1:500-1:1000
Form	Supplied at 1.0mg/mL in phosphate buffered saline (without Mg ²⁺ and Ca ²⁺), pH 7.4, 150mM NaCl, 0.02% sodium azide and 50% glycerol.
Purification Method	Antibodies were produced by immunizing rabbits with synthetic peptide and KLH conjugates. Antibodies were purified by affinity-chromatography using epitope-specific peptide.
Clonality	Polyclonal
Alias	BMDP; MRX; ABC15; ABCP; BCRP1
Product Type	Polyclonal Antibody
Immunogen Species	Homo sapiens (Human)
Target Names	ABCG2

Image



Western blot analysis of extract from HL-60 cells using ABCG2(CD338) Antibody

Usage

For Research Use Only. Not for use in diagnostic or therapeutic procedures.