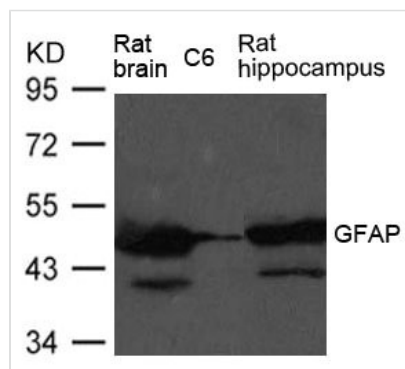




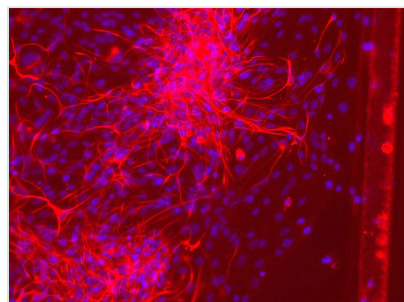
GFAP Antibody

Product Code	CSB-PA047116
Storage	Upon receipt, store at -20°C or -80°C. Avoid repeated freeze.
Uniprot No.	P14136
Immunogen	Peptide sequence around aa. 423~427 (E-S-K-Q-E) derived from Human GFAP.
Raised In	Rabbit
Species Reactivity	Human,Rat
Specificity	The antibody detects endogenous level of total GFAP protein.
Tested Applications	ELISA,WB,IF;WB:1:500-1:1000,IF:1:100-1:200
Form	Supplied at 1.0mg/mL in phosphate buffered saline (without Mg2+ and Ca2+), pH 7.4, 150mM NaCl, 0.02% sodium azide and 50% glycerol.
Purification Method	Antibodies were produced by immunizing rabbits with synthetic peptide and KLH conjugates. Antibodies were purified by affinity-chromatography using epitope-specific peptide.
Clonality	Polyclonal
Alias	FLJ45472
Product Type	Polyclonal Antibody
Immunogen Species	Homo sapiens (Human)
Target Names	GFAP

Image



Western blot analysis of extract from Rat brain, Rat hippocampus tissue and C6 cells using GFAP Antibody



Immunofluorescence staining of paraffin-embedded Glioma cells of Spinal Cord using GFAP Antibody.